



中国认可  
国际互认  
检测  
TESTING  
CNAS L2929

**Test Report**

No.: T52410270078XM

Date: MAY 09, 2024

Page 1 of 27

GUANGDONG HUANGER BABY PRODUCTS CO LTD

HUANGER BUILDING, EAST HAISHENG ROAD, LAIMEI INDUSTRIAL PARK, FENGXIANG TOWN, CHENGHAI DISTRICT, SHANTOU CITY, GUANGDONG PROVINCE, CHINA

The following samples were submitted and identified by/on behalf of the client as:

BABY TOYS

Style No. : HE0301, HE0303, HE0304, HE0305, HE0306, HE0307, HE0308, HE0309, HE0310, HE0311, HE0312, HE0315, HE0317, HE0318, HE0601, HE0603, HE0604, HE0605, HE0606, HE0607, HE0610, HE0611, HE0615, HE0616, HE0617, HE0618, HE0629, HE0630, HE0631, HE0637, HE0638, HE0639, HE0635, HE0636, HE0621, HE0633, HE0634, HE0640, HE0643, HE0644, HE0650, HE0651, HE0652, HE0101, HE0104, HE0105, HE0107, HE0108, HE0109, HE0110, HE0111, HE0112, HE0113, HE0114, HE0115, HE0102, HE0103, HE0106, HE0116, HE0117, HE0118, HE0119, HE0120, HE0121, HE0122, HE0123, HE0124, HE0125, HE0126, HE0127, HE0128, HE0129, HE0130, HE0131, HE0132, HE0133, HE0134, HE0135, HE0142, HE0149

Labeled Age Grading : 0+,6M+,18M+

Requested Age Grading : 0+,6M+

\*\*\*\*\*



Unless otherwise agreed in writing, this document is issued by the Company subject to its General Conditions of Service printed overleaf, available on request or accessible at <http://www.sgs.com/en/Terms-and-Conditions.aspx> and, for electronic format documents, subject to Terms and Conditions for Electronic Documents at <http://www.sgs.com/en/Terms-and-Conditions/Terms-e-Document.aspx>. Attention is drawn to the limitation of liability, indemnification and jurisdiction issues defined therein. Any holder of this document is advised that information contained hereon reflects the Company's findings at the time of its intervention only and within the limits of Client's instructions, if any. The Company's sole responsibility is to its Client and this document does not exonerate parties to a transaction from exercising all their rights and obligations under the transaction documents. This document cannot be reproduced except in full, without prior written approval of the Company. Any unauthorized alteration, forgery or falsification of the content or appearance of this document is unlawful and offenders may be prosecuted to the fullest extent of the law. Unless otherwise stated the results shown in this test report refer only to the sample(s) tested and such sample(s) are retained for 30 days only.

Attention: To check the authenticity of testing / inspection report & certificate, please contact us at telephone:(86-755) 8307 1443, or email: CN.Doccheck@sgs.com

SGS-CSTC Standards Technical Services Co., Ltd.  
Shenzhen Branch Testing Center Hardlines

Room 101-801, Plant 4 & Room 101, Plant 2 & Room 101, Plant 3 & Room 301-501, Plant 3, Jilanghao (Banlian) Industrial Plant Area, No.430, Jilua Road, Banlian Community, Banlian Street, Longgang District, Shenzhen, Guangdong, China 518129 www.sgs.com.cn  
中国·广东·深圳市龙岗区坂田街道坂田社区吉华路430号江源(坂田)工业厂区厂房4号 101-901、2号101、3号301-501 邮编: 518129 t:(86-755) 25328888 sgs.china@sgs.com

Member of the SGS Group (SGS SA)

# Test Report

No.: T52410270078XM

Date: MAY 09, 2024

Page 2 of 27

Age Group Assessed by SGS As Per Age Guideline : ALL AGES FOR HE0194, HE0652, HE0637, HE0640, HE0638, HE0318, HE0310, HE0317, HE0306, HE8079; OVER 18 MONTHS FOR HE8078; OVER 6 MONTHS FOR OTHERS

Age Group Applied in Testing : ALL AGES FOR HE0194, HE0652, HE0637, HE0640, HE0638, HE0318, HE0310, HE0317, HE0306, HE8079; OVER 18 MONTHS FOR HE8078; OVER 6 MONTHS FOR OTHERS

Sample Receiving Date : MAR 20, 2024

Last Submission Sample Date : APR 28, 2024

Further Information Date : APR 18, 2024

Testing Period : MAR 20, 2024 TO MAY 09, 2024

Selected test(s) as requested by the client, please refer to test result page(s) for details:

Test Requested		Conclusion
1.	With reference to the European standard on Safety of toys:-	--
	EN 71-1:2014+A1:2018 – Safety of toys – Part 1: Mechanical and Physical Properties	PASS
	EN 71-2: 2020 – Safety of toys – Part 2: Flammability	PASS
	Labeling requirement (Washing/Cleaning Label, CE mark, importer / manufacturer mark (name, address), product identification) according to Informative Annex A.26 and A.33 of the European standard on Safety of toys EN 71-1:2014+A1:2018 and the Directive 2009/48/EC-Safety of toys	SEE RESULT
	Directive 2009/48/EC and its amendment Council Directive (EU) 2017/738, Commission Directive (EU) 2018/725, Commission Directive (EU) 2019/1922 – EN 71-3:2019 + A1:2021 – Migration of certain elements	PASS



Unless otherwise agreed in writing, this document is issued by the Company subject to its General Conditions of Service printed overleaf, available on request or accessible at <http://www.sgs.com/en/Terms-and-Conditions.aspx> and, for electronic format documents, subject to Terms and Conditions for Electronic Documents at <http://www.sgs.com/en/Terms-and-Conditions/Terms-e-Document.aspx>. Attention is drawn to the limitation of liability, indemnification and jurisdiction issues defined therein. Any holder of this document is advised that information contained hereon reflects the Company's findings at the time of its intervention only and within the limits of Client's instructions, if any. The Company's sole responsibility is to its Client and this document does not exonerate parties to a transaction from exercising all their rights and obligations under the transaction documents. This document cannot be reproduced except in full, without prior written approval of the Company. Any unauthorized alteration, forgery or falsification of the content or appearance of this document is unlawful and offenders may be prosecuted to the fullest extent of the law. Unless otherwise stated the results shown in this test report refer only to the sample(s) tested and such sample(s) are retained for 30 days only.

Attention: To check the authenticity of testing / inspection report & certificate, please contact us at telephone:(86-755) 8307 1443, or email: CN.Doccheck@sgs.com

SGS-CSTC (Shenzhen) Technical Services Co., Ltd.  
Shenzhen Branch Testing Center Hardlines

Room 101-801, Plant 4 & Room 101, Plant 2 & Room 101, Plant 3 & Room 301-501, Plant 3, Jilanghao (Banian) Industrial Plant Area, No.430, Jilang Road, Banian Community, Banian Street, Longgang District, Shenzhen, Guangdong, China 518129 www.sgs.com.cn  
中国·广东·深圳市龙岗区坂田街道坂田社区吉华路430号江源(坂田)工业厂区厂房4号 101-901、2号101、3号101、3号301-501 邮编: 518129 t:(86-755) 25328888 sgs.china@sgs.com

Test Requested	Conclusion
2. With reference to the British Standard on Safety of toys:-	--
BS EN 71-1:2014+A1:2018 – Safety of toys – Part 1: Mechanical and Physical Properties	PASS
BS EN 71-2:2020 – Safety of toys – Part 2: Flammability	PASS
Labeling requirement (Washing/Cleaning Label, UKCA marking or CE marking, importer/manufacturer name and address, product identification) for the market of Great Britain (England, Wales and Scotland) with reference to the Toys (Safety) Regulations 2011	SEE RESULT
The Toys (Safety) Regulations 2011 (S.I. 2011 No.1881) & its Amendments (including S.I. 2022 No.659) & Directive 2009/48/EC and its amendment Council Directive (EU) 2017/738, Commission Directive (EU) 2018/725, Commission Directive (EU) 2019/1922 – BS EN 71-3:2019 + A1:2021 – Migration of certain elements	PASS

Remark : #Retest sample(s) were submitted on APR 28, 2024 for test clause 4.2& 5.4.3.5& 5.4.9.2& 5.8& 5.1a& 5.1b& 7.1

\*\*\*\*\* FOR FURTHER DETAILS, PLEASE REFER TO THE FOLLOWING PAGE(S) \*\*\*\*\*

Signed for and on behalf of  
 SGS-CSTC Standards Technical  
 Services Co., Ltd. Shenzhen Branch Testing Center



Sun Enxu, Aaron  
 Dept. Manager  
 CNAS Approved Signatories

Qu Ping Kiky  
 Dept. Manager  
 CNAS Approved Signatories



Unless otherwise agreed in writing, this document is issued by the Company subject to its General Conditions of Service printed overleaf, available on request or accessible at <http://www.sgs.com/en/Terms-and-Conditions.aspx> and, for electronic format documents, subject to Terms and Conditions for Electronic Documents at <http://www.sgs.com/en/Terms-and-Conditions/Terms-e-Document.aspx>. Attention is drawn to the limitation of liability, indemnification and jurisdiction issues defined therein. Any holder of this document is advised that information contained hereon reflects the Company's findings at the time of its intervention only and within the limits of Client's instructions, if any. The Company's sole responsibility is to its Client and this document does not exonerate parties to a transaction from exercising all their rights and obligations under the transaction documents. This document cannot be reproduced except in full, without prior written approval of the Company. Any unauthorized alteration, forgery or falsification of the content or appearance of this document is unlawful and offenders may be prosecuted to the fullest extent of the law. Unless otherwise stated the results shown in this test report refer only to the sample(s) tested and such sample(s) are retained for 30 days only.

Attention: To check the authenticity of testing / inspection report & certificate, please contact us at telephone:(86-755) 8307 1443, or email: CN.Doccheck@sgs.com

**Results:**

**EUROPEAN STANDARD ON SAFETY OF TOYS**

**EN 71-1:2014 + A1:2018 – SAFETY OF TOYS – PART 1: MECHANICAL AND PHYSICAL PROPERTIES**

AS SPECIFIED IN EN 71-1:2014 + A1:2018 – SAFETY OF TOYS – PART 1: MECHANICAL AND PHYSICAL PROPERTIES

Clauses relevant to the item:

Clause	Description	Result
4	General Requirements	
4.1	Materials cleanliness	PASS
4.2	Assembly	PASS#
4.7	Edges	PASS
4.8	Points and Metallic Wires	PASS
4.10	Parts moving against each other:	
4.10.2	Driving Mechanisms	PASS
4.10.4	Springs	PASS
4.11	Mouth Actuated Toys and toys intended to be put in the mouth	PASS
4.20	Acoustics	PASS
5	Toys intended for Children under 36 months	
5.1	General Requirements	
5.1a	Small part requirement on toys & removable Components (Test method 8.2)	PASS#
5.1b	Torque test (Test method 8.3)	PASS
5.1b	Tension test (Test method 8.4)	PASS#
5.1b	Drop test (Test method 8.5)	PASS
5.1b	Tip over test (Test method 8.6)	PASS
5.1b	Impact test (Test method 8.7)	PASS
5.1b	Compression test (Test method 8.8)	PASS
5.1b	Sharp edge (Test method 8.11)	PASS
5.1b	Sharp point (Test method 8.12)	PASS
5.1d	Large and bulky toys	PASS
5.1f	The casing of toys intended for children too young to sit up unaided	PASS
5.2	Soft-filled toys and soft-filled parts of a toy	PASS
5.4	Cords, chains and electrical cables in toys	PASS#
5.8	Shape and Size of certain Toys	PASS#
6	Packaging	PASS



Unless otherwise agreed in writing, this document is issued by the Company subject to its General Conditions of Service printed overleaf, available on request or accessible at <http://www.sgs.com/en/Terms-and-Conditions.aspx> and, for electronic format documents, subject to Terms and Conditions for Electronic Documents at <http://www.sgs.com/en/Terms-and-Conditions/Terms-e-Documents.aspx>. Attention is drawn to the limitation of liability, indemnification and jurisdiction issues defined therein. Any holder of this document is advised that information contained hereon reflects the Company's findings at the time of its intervention only and within the limits of Client's instructions, if any. The Company's sole responsibility is to its Client and this document does not exonerate parties to a transaction from exercising all their rights and obligations under the transaction documents. This document cannot be reproduced except in full, without prior written approval of the Company. Any unauthorized alteration, forgery or falsification of the content or appearance of this document is unlawful and offenders may be prosecuted to the fullest extent of the law. Unless otherwise stated the results shown in this test report refer only to the sample(s) tested and such sample(s) are retained for 30 days only.

Attention: To check the authenticity of testing / inspection report & certificate, please contact us at telephone:(86-755) 8307 1443, or email: CN.Doccheck@sgs.com

Clause	Description	Result
7	Warnings, markings and instructions for use	
	Only English warnings were checked for the clause 7.	
7.1	General	PASS#
	Note: Please note that for assessing the visibility and legibility of warnings, CEN has introduced good practice in the informative Annex A.33 by addressing the following aspects: a) Emphasising the warning b) Contrast, background and colours c) Reflecting surfaces and obscuring material d) Font type e) Font size f) Logical direction of text For more details, see EN 71-1.	
7.22	Toys with cords or chains intended for children of 18 months and over but under 36 months	PASS
7.23	Toys intended to be attached to a cradle, cot or perambulator	PASS
	According to 2009/48/EC, warnings and safety instructions shall be written in a language or languages easily understood by consumers.	



**EN 71-2: 2020 – SAFETY OF TOYS – PART 2: FLAMMABILITY**

AS SPECIFIED IN EN 71-2: 2020 – SAFETY OF TOYS – PART 2: FLAMMABILITY

Type of gas: Butane gas used in the test burner

Clauses relevant to the item:

Clause	Description	Result
4.1	General requirements	PASS
4.5	Soft-filled toys	PASS
	The red/blue octopus was not tested since the stuffed portion of the sample has a maximum dimension less than 150mm.	

Result Page:

Soft-filled Toys (Clause 4.5)

Sample	Burning Rate (mm/sec)
See sample description	9.1

(Requirement: The rate of spread of flame on the surface of toy shall be not greater than 30 mm/sec or shall self-extinguish)



SGS-CSTC Technical Services Co., Ltd.  
Shenzhen Branch Testing Center Hardlines

Unless otherwise agreed in writing, this document is issued by the Company subject to its General Conditions of Service printed overleaf, available on request or accessible at <http://www.sgs.com/en/Terms-and-Conditions.aspx> and, for electronic format documents, subject to Terms and Conditions for Electronic Documents at <http://www.sgs.com/en/Terms-and-Conditions/Terms-e-Document.aspx>. Attention is drawn to the limitation of liability, indemnification and jurisdiction issues defined therein. Any holder of this document is advised that information contained hereon reflects the Company's findings at the time of its intervention only and within the limits of Client's instructions, if any. The Company's sole responsibility is to its Client and this document does not exonerate parties to a transaction from exercising all their rights and obligations under the transaction documents. This document cannot be reproduced except in full, without prior written approval of the Company. Any unauthorized alteration, forgery or falsification of the content or appearance of this document is unlawful and offenders may be prosecuted to the fullest extent of the law. Unless otherwise stated the results shown in this test report refer only to the sample(s) tested and such sample(s) are retained for 30 days only.

Attention: To check the authenticity of testing / inspection report & certificate, please contact us at telephone:(86-755) 8307 1443, or email: CN.Doccheck@sgs.com

Room 101-801, Plant 4 & Room 101, Plant 2 & Room 101, Plant 3 & Room 301-501, Plant 3, Jilanghao (Banlian) Industrial Plant Area, No.430, Jilua Road, Banlian Community, Banlian Street, Longgang District, Shenzhen, Guangdong, China 518129 www.sgs.com.cn  
中国·广东·深圳市龙岗区坂田街道坂田社区吉华路430号江源(坂田)工业厂区厂房4号 101-901、2号101、3号301-501 邮编: 518129 t:(86-755) 25328888 sgs.china@sgs.com

**LABELING REQUIREMENT (WASHING/CLEANING LABEL, CE MARK, IMPORTER / MANUFACTURER MARK (NAME, ADDRESS), PRODUCT IDENTIFICATION) ACCORDING TO INFORMATIVE ANNEX A.26 AND A.33 OF THE EUROPEAN STANDARD ON SAFETY OF TOYS EN 71-1:2014+A1:2018 AND THE DIRECTIVE 2009/48/EC-SAFETY OF TOYS**

Summary table:

	Observation Result	Location
Washing/Cleaning instruction	Absent. See note 1	----
CE mark	Present	Packaging
Importer's Name & Address	Absent. See note 3	----
Manufacturer's Name & Address	Absent. See note 3	----
Product ID	Present	Packaging

Note:

1. According to Directive 2009/48/EC, a toy intended for use by children under 36 months must be designed and manufactured in such a way that it can be cleaned. A textile toy must, to this end, be washable, except if it contains a mechanism that may be damaged if soak washed. The manufacturer should, if applicable, provide instructions on how the toy has to be cleaned. According to the GUIDANCE DOCUMENT ON THE APPLICATION OF DIRECTIVE 2009/48/EC ON THE SAFETY OF TOYS, manufacturer shall not label "surface washing" on textile toys which, under the TSD, need to be soak washable."
2. CE marking should be visible from outside the packaging and its height must be at least 5mm.
3. Manufacturer's and Importer's name, registered trade name or registered trade mark and the address at which the manufacturer can be contacted must be indicated on the toy or, where that is not possible, on its packaging or in a document accompanying the toy.
4. Manufacturers must ensure that their toys bear a type, batch, serial or model number or other element allowing their identification, or where the size or nature of the toy does not allow it, that the required information is provided on the packaging or in a document accompanying the toy.



**Chemical Test Result(s) :**

Test Part Description :

Specimen No.	SGS Sample ID	Description
SN1	XMN24-001663.001	Yellow plastic
SN2	XMN24-001663.002	Orange plastic
SN3	XMN24-001663.003	Blue colored series fabric
SN4	XMN24-001663.004	White coating on plastic
SN5	XMN24-001663.005	Transparent plastic
SN6	XMN24-001663.006	Light nude plastic
SN7	XMN24-001663.007	Green plastic
SN8	XMN24-001663.008	Red soft plastic
SN9	XMN24-001663.009	Pink soft plastic
SN10	XMN24-001663.010	Purple plastic

Remarks :

- (1) 1 mg/kg = 0.0001%
- (2) MDL = Method Detection Limit
- (3) ND = Not Detected ( < MDL )
- (4) "-" = Not Regulated

**Directive 2009/48/EC and its amendment Council Directive (EU) 2017/738, Commission Directive (EU) 2018/725, Commission Directive (EU) 2019/1922 – EN 71-3:2019+A1:2021 – Migration of certain elements**

**Category III: Scraped-off toy material**

Test Method : With reference to EN 71-3:2019+A1:2021. Analysis of general elements was performed by ICP-MS / Chromium (III) was obtained by calculation, chromium (VI) was analyzed by IC-UV-Vis or LC-ICP-MS / organic tin was analyzed by GC-MS.



SGS-CSTC Shenzhen Technical Services Co., Ltd.  
Shenzhen Branch Testing Center Hardlines

Unless otherwise agreed in writing, this document is issued by the Company subject to its General Conditions of Service printed overleaf, available on request or accessible at <http://www.sgs.com/en/Terms-and-Conditions.aspx> and, for electronic format documents, subject to Terms and Conditions for Electronic Documents at <http://www.sgs.com/en/Terms-and-Conditions/Terms-e-Documents.aspx>. Attention is drawn to the limitation of liability, indemnification and jurisdiction issues defined therein. Any holder of this document is advised that information contained hereon reflects the Company's findings at the time of its intervention only and within the limits of Client's instructions, if any. The Company's sole responsibility is to its Client and this document does not exonerate parties to a transaction from exercising all their rights and obligations under the transaction documents. This document cannot be reproduced except in full, without prior written approval of the Company. Any unauthorized alteration, forgery or falsification of the content or appearance of this document is unlawful and offenders may be prosecuted to the fullest extent of the law. Unless otherwise stated the results shown in this test report refer only to the sample(s) tested and such sample(s) are retained for 30 days only.

Attention: To check the authenticity of testing / inspection report & certificate, please contact us at telephone:(86-755) 8307 1443, or email: CN.Doccheck@sgs.com

Room 101-801, Plant 4 & Room 101, Plant 2 & Room 101, Plant 3 & Room 301-501, Plant 3, Jilanghao (Banlian) Industrial Plant Area, No.430, Jilua Road, Banlian Community, Banlian Street, Longgang District, Shenzhen, Guangdong, China 518129 www.sgs.com.cn  
中国·广东·深圳市龙岗区坂田街道坂田社区吉华路430号江源(坂田)工业区厂房4号 101-901、2号101、3号301-501 邮编: 518129 t:(86-755) 25328888 sgs.china@sgs.com

# Test Report

No.: T52410270078XM

Date: MAY 09, 2024

Page 9 of 27

Test Item(s)	Limit	Unit	MDL	001	002	003
Mass of Trace Amount	-	g	-	0.3000	0.3000	0.3000
Soluble Aluminum (Al)	28130	mg/kg	50	ND	ND	ND
Soluble Arsenic (As)	47	mg/kg	10	ND	ND	ND
Soluble Boron (B)	15000	mg/kg	50	ND	ND	ND
Soluble Barium (Ba)	18750	mg/kg	50	ND	ND	ND
Soluble Cadmium (Cd)	17	mg/kg	5	ND	ND	ND
Soluble Cobalt (Co)	130	mg/kg	10	ND	ND	ND
Soluble Chromium (Cr)	-	mg/kg	1	ND	ND	ND
Soluble Chromium (III) (Cr III)	460	mg/kg	1	ND	ND	ND
Soluble Copper (Cu)	7700	mg/kg	50	ND	ND	ND
Soluble Mercury (Hg)	94	mg/kg	10	ND	ND	ND
Soluble Manganese (Mn)	15000	mg/kg	50	ND	ND	ND
Soluble Nickel (Ni)	930	mg/kg	10	ND	ND	ND
Soluble Lead (Pb)	23	mg/kg	2.3	ND	ND	ND
Soluble Antimony (Sb)	560	mg/kg	10	ND	ND	ND
Soluble Selenium (Se)	460	mg/kg	10	ND	ND	ND
Soluble Zinc (Zn)	46000	mg/kg	50	ND	ND	ND
Soluble Strontium (Sr)	56000	mg/kg	50	ND	ND	ND
Soluble Tin (Sn)	180000	mg/kg	3	ND	ND	ND
Soluble Organic Tin	12	mg/kg	-	ND	ND	ND
Soluble Chromium (VI) (Cr VI)	0.053	mg/kg	0.010	ND	ND	ND



Unless otherwise agreed in writing, this document is issued by the Company subject to its General Conditions of Service printed overleaf, available on request or accessible at <http://www.sgs.com/en/Terms-and-Conditions.aspx> and, for electronic format documents, subject to Terms and Conditions for Electronic Documents at <http://www.sgs.com/en/Terms-and-Conditions/Terms-e-Documents.aspx>. Attention is drawn to the limitation of liability, indemnification and jurisdiction issues defined therein. Any holder of this document is advised that information contained hereon reflects the Company's findings at the time of its intervention only and within the limits of Client's instructions, if any. The Company's sole responsibility is to its Client and this document does not exonerate parties to a transaction from exercising all their rights and obligations under the transaction documents. This document cannot be reproduced except in full, without prior written approval of the Company. Any unauthorized alteration, forgery or falsification of the content or appearance of this document is unlawful and offenders may be prosecuted to the fullest extent of the law. Unless otherwise stated the results shown in this test report refer only to the sample(s) tested and such sample(s) are retained for 30 days only.

Attention: To check the authenticity of testing / inspection report & certificate, please contact us at telephone: (86-755) 8307 1443, or email: CN.Doccheck@sgs.com

# Test Report

No.: T52410270078XM

Date: MAY 09, 2024

Page 10 of 27

Test Item(s)	Limit	Unit	MDL	004	005	006
Mass of Trace Amount	-	g	-	0.0431	0.3000	0.3000
Soluble Aluminum (Al)	28130	mg/kg	50	88	ND	ND
Soluble Arsenic (As)	47	mg/kg	10	ND	ND	ND
Soluble Boron (B)	15000	mg/kg	50	ND	ND	ND
Soluble Barium (Ba)	18750	mg/kg	50	ND	ND	ND
Soluble Cadmium (Cd)	17	mg/kg	5	ND	ND	ND
Soluble Cobalt (Co)	130	mg/kg	10	ND	ND	ND
Soluble Chromium (Cr)	-	mg/kg	1	ND	ND	ND
Soluble Chromium (III) (Cr III)	460	mg/kg	1	ND	ND	ND
Soluble Copper (Cu)	7700	mg/kg	50	ND	ND	ND
Soluble Mercury (Hg)	94	mg/kg	10	ND	ND	ND
Soluble Manganese (Mn)	15000	mg/kg	50	ND	ND	ND
Soluble Nickel (Ni)	930	mg/kg	10	ND	ND	ND
Soluble Lead (Pb)	23	mg/kg	2.3	ND	ND	ND
Soluble Antimony (Sb)	560	mg/kg	10	ND	ND	ND
Soluble Selenium (Se)	460	mg/kg	10	ND	ND	ND
Soluble Zinc (Zn)	46000	mg/kg	50	ND	ND	ND
Soluble Strontium (Sr)	56000	mg/kg	50	ND	ND	ND
Soluble Tin (Sn)	180000	mg/kg	3	ND	ND	ND
Soluble Organic Tin	12	mg/kg	-	ND	ND	ND
Soluble Chromium (VI) (Cr VI)	0.053	mg/kg	0.010	ND	ND	ND



Unless otherwise agreed in writing, this document is issued by the Company subject to its General Conditions of Service printed overleaf, available on request or accessible at <http://www.sgs.com/en/Terms-and-Conditions.aspx> and, for electronic format documents, subject to Terms and Conditions for Electronic Documents at <http://www.sgs.com/en/Terms-and-Conditions/Terms-e-Documents.aspx>. Attention is drawn to the limitation of liability, indemnification and jurisdiction issues defined therein. Any holder of this document is advised that information contained hereon reflects the Company's findings at the time of its intervention only and within the limits of Client's instructions, if any. The Company's sole responsibility is to its Client and this document does not exonerate parties to a transaction from exercising all their rights and obligations under the transaction documents. This document cannot be reproduced except in full, without prior written approval of the Company. Any unauthorized alteration, forgery or falsification of the content or appearance of this document is unlawful and offenders may be prosecuted to the fullest extent of the law. Unless otherwise stated the results shown in this test report refer only to the sample(s) tested and such sample(s) are retained for 30 days only.

Attention: To check the authenticity of testing / inspection report & certificate, please contact us at telephone: (86-755) 8307 1443, or email: CN.Doccheck@sgs.com

# Test Report

No.: T52410270078XM

Date: MAY 09, 2024

Page 11 of 27

Test Item(s)	Limit	Unit	MDL	007	008	009
Mass of Trace Amount	-	g	-	0.3000	0.3000	0.3000
Soluble Aluminum (Al)	28130	mg/kg	50	ND	ND	ND
Soluble Arsenic (As)	47	mg/kg	10	ND	ND	ND
Soluble Boron (B)	15000	mg/kg	50	ND	ND	ND
Soluble Barium (Ba)	18750	mg/kg	50	ND	ND	ND
Soluble Cadmium (Cd)	17	mg/kg	5	ND	ND	ND
Soluble Cobalt (Co)	130	mg/kg	10	ND	ND	ND
Soluble Chromium (Cr)	-	mg/kg	1	ND	ND	ND
Soluble Chromium (III) (Cr III)	460	mg/kg	1	ND	ND	ND
Soluble Copper (Cu)	7700	mg/kg	50	ND	ND	ND
Soluble Mercury (Hg)	94	mg/kg	10	ND	ND	ND
Soluble Manganese (Mn)	15000	mg/kg	50	ND	ND	ND
Soluble Nickel (Ni)	930	mg/kg	10	ND	ND	ND
Soluble Lead (Pb)	23	mg/kg	2.3	ND	ND	ND
Soluble Antimony (Sb)	560	mg/kg	10	ND	ND	ND
Soluble Selenium (Se)	460	mg/kg	10	ND	ND	ND
Soluble Zinc (Zn)	46000	mg/kg	50	ND	ND	ND
Soluble Strontium (Sr)	56000	mg/kg	50	ND	ND	ND
Soluble Tin (Sn)	180000	mg/kg	3	ND	ND	ND
Soluble Organic Tin	12	mg/kg	-	ND	ND	ND
Soluble Chromium (VI) (Cr VI)	0.053	mg/kg	0.010	ND	ND	ND



Unless otherwise agreed in writing, this document is issued by the Company subject to its General Conditions of Service printed overleaf, available on request or accessible at <http://www.sgs.com/en/Terms-and-Conditions.aspx> and, for electronic format documents, subject to Terms and Conditions for Electronic Documents at <http://www.sgs.com/en/Terms-and-Conditions/Terms-e-Documents.aspx>. Attention is drawn to the limitation of liability, indemnification and jurisdiction issues defined therein. Any holder of this document is advised that information contained hereon reflects the Company's findings at the time of its intervention only and within the limits of Client's instructions, if any. The Company's sole responsibility is to its Client and this document does not exonerate parties to a transaction from exercising all their rights and obligations under the transaction documents. This document cannot be reproduced except in full, without prior written approval of the Company. Any unauthorized alteration, forgery or falsification of the content or appearance of this document is unlawful and offenders may be prosecuted to the fullest extent of the law. Unless otherwise stated the results shown in this test report refer only to the sample(s) tested and such sample(s) are retained for 30 days only.

Attention: To check the authenticity of testing / inspection report & certificate, please contact us at telephone:(86-755) 8307 1443, or email: CN.Doccheck@sgs.com

<u>Test Item(s)</u>	<u>Limit</u>	<u>Unit</u>	<u>MDL</u>	<u>010</u>
Mass of Trace Amount	-	g	-	0.3000
Soluble Aluminum (Al)	28130	mg/kg	50	ND
Soluble Arsenic (As)	47	mg/kg	10	ND
Soluble Boron (B)	15000	mg/kg	50	ND
Soluble Barium (Ba)	18750	mg/kg	50	ND
Soluble Cadmium (Cd)	17	mg/kg	5	ND
Soluble Cobalt (Co)	130	mg/kg	10	ND
Soluble Chromium (Cr)	-	mg/kg	1	ND
Soluble Chromium (III) (Cr III)	460	mg/kg	1	ND
Soluble Copper (Cu)	7700	mg/kg	50	ND
Soluble Mercury (Hg)	94	mg/kg	10	ND
Soluble Manganese (Mn)	15000	mg/kg	50	ND
Soluble Nickel (Ni)	930	mg/kg	10	ND
Soluble Lead (Pb)	23	mg/kg	2.3	ND
Soluble Antimony (Sb)	560	mg/kg	10	ND
Soluble Selenium (Se)	460	mg/kg	10	ND
Soluble Zinc (Zn)	46000	mg/kg	50	ND
Soluble Strontium (Sr)	56000	mg/kg	50	ND
Soluble Tin (Sn)	180000	mg/kg	3	ND
Soluble Organic Tin	12	mg/kg	-	ND
Soluble Chromium (VI) (Cr VI)	0.053	mg/kg	0.010	ND

Notes :

- + Soluble Chromium is not restricted by EN 71-3:2019+A1:2021, results shown only for reference
- ^ Confirmation test of soluble organic tin is not required in case of soluble tin, after conversion, does not exceed the soluble organic tin requirement as specified in EN 71-3:2019+A1:2021.

The below note(s) is(are) applicable in case the relevant superscript(s) and symbol(s) was(were) shown in the result table:

- \* = Exceeds Permissible Limit



Unless otherwise agreed in writing, this document is issued by the Company subject to its General Conditions of Service printed overleaf, available on request or accessible at <http://www.sgs.com/en/Terms-and-Conditions.aspx> and, for electronic format documents, subject to Terms and Conditions for Electronic Documents at <http://www.sgs.com/en/Terms-and-Conditions/Terms-e-Documents.aspx>. Attention is drawn to the limitation of liability, indemnification and jurisdiction issues defined therein. Any holder of this document is advised that information contained hereon reflects the Company's findings at the time of its intervention only and within the limits of Client's instructions, if any. The Company's sole responsibility is to its Client and this document does not exonerate parties to a transaction from exercising all their rights and obligations under the transaction documents. This document cannot be reproduced except in full, without prior written approval of the Company. Any unauthorized alteration, forgery or falsification of the content or appearance of this document is unlawful and offenders may be prosecuted to the fullest extent of the law. Unless otherwise stated the results shown in this test report refer only to the sample(s) tested and such sample(s) are retained for 30 days only.

Attention: To check the authenticity of testing / inspection report & certificate, please contact us at telephone:(86-755) 8307 1443, or email: CN.Doccheck@sgs.com

**BRITISH STANDARD ON SAFETY OF TOYS**

**BS EN 71-1:2014+A1:2018 – SAFETY OF TOYS – PART 1: MECHANICAL AND PHYSICAL PROPERTIES**

AS SPECIFIED IN BS EN 71-1:2014+A1:2018 – SAFETY OF TOYS – PART 1: MECHANICAL AND PHYSICAL PROPERTIES

Clauses relevant to the item:

Clause	Description	Result
4	General Requirements	
4.1	Materials cleanliness	PASS
4.2	Assembly	PASS#
4.7	Edges	PASS
4.8	Points and Metallic Wires	PASS
4.10	Parts moving against each other:	
4.10.2	Driving Mechanisms	PASS
4.10.4	Springs	PASS
4.11	Mouth Actuated Toys and toys intended to be put in the mouth	PASS
4.20	Acoustics	PASS
5	Toys intended for Children under 36 months	
5.1	General Requirements	
5.1a	Small part requirement on toys & removable Components (Test method 8.2)	PASS#
5.1b	Torque test (Test method 8.3)	PASS
5.1b	Tension test (Test method 8.4)	PASS#
5.1b	Drop test (Test method 8.5)	PASS
5.1b	Tip over test (Test method 8.6)	PASS
5.1b	Impact test (Test method 8.7)	PASS
5.1b	Compression test (Test method 8.8)	PASS
5.1b	Sharp edge (Test method 8.11)	PASS
5.1b	Sharp point (Test method 8.12)	PASS
5.1d	Large and bulky toys	PASS
5.1f	The casing of toys intended for children too young to sit up unaided	PASS
5.2	Soft-filled toys and soft-filled parts of a toy	PASS
5.4	Cords, chains and electrical cables in toys	PASS#
5.8	Shape and Size of certain Toys	PASS#
6	Packaging	PASS



Unless otherwise agreed in writing, this document is issued by the Company subject to its General Conditions of Service printed overleaf, available on request or accessible at <http://www.sgs.com/en/Terms-and-Conditions.aspx> and, for electronic format documents, subject to Terms and Conditions for Electronic Documents at <http://www.sgs.com/en/Terms-and-Conditions/Terms-e-Document.aspx>. Attention is drawn to the limitation of liability, indemnification and jurisdiction issues defined therein. Any holder of this document is advised that information contained hereon reflects the Company's findings at the time of its intervention only and within the limits of Client's instructions, if any. The Company's sole responsibility is to its Client and this document does not exonerate parties to a transaction from exercising all their rights and obligations under the transaction documents. This document cannot be reproduced except in full, without prior written approval of the Company. Any unauthorized alteration, forgery or falsification of the content or appearance of this document is unlawful and offenders may be prosecuted to the fullest extent of the law. Unless otherwise stated the results shown in this test report refer only to the sample(s) tested and such sample(s) are retained for 30 days only.

Attention: To check the authenticity of testing / inspection report & certificate, please contact us at telephone:(86-755) 8307 1443, or email: CN.Doccheck@sgs.com

Clause	Description	Result
7	Warnings, markings and instructions for use	
7.1	General	PASS#
	Note: Please note that for assessing the visibility and legibility of warnings, CEN has introduced good practice in the informative Annex A.33 by addressing the following aspects: a) Emphasising the warning b) Contrast, background and colours c) Reflecting surfaces and obscuring material d) Font type e) Font size f) Logical direction of text For more details, see EN 71-1.	
7.22	Toys with cords or chains intended for children of 18 months and over but under 36 months	PASS
7.23	Toys intended to be attached to a cradle, cot or perambulator	PASS



SGS-CSTC Standards Technical Services Co., Ltd.  
Shenzhen Branch Testing Center Hardlines

Unless otherwise agreed in writing, this document is issued by the Company subject to its General Conditions of Service printed overleaf, available on request or accessible at <http://www.sgs.com/en/Terms-and-Conditions.aspx> and, for electronic format documents, subject to Terms and Conditions for Electronic Documents at <http://www.sgs.com/en/Terms-and-Conditions/Terms-e-Documents.aspx>. Attention is drawn to the limitation of liability, indemnification and jurisdiction issues defined therein. Any holder of this document is advised that information contained hereon reflects the Company's findings at the time of its intervention only and within the limits of Client's instructions, if any. The Company's sole responsibility is to its Client and this document does not exonerate parties to a transaction from exercising all their rights and obligations under the transaction documents. This document cannot be reproduced except in full, without prior written approval of the Company. Any unauthorized alteration, forgery or falsification of the content or appearance of this document is unlawful and offenders may be prosecuted to the fullest extent of the law. Unless otherwise stated the results shown in this test report refer only to the sample(s) tested and such sample(s) are retained for 30 days only.

Attention: To check the authenticity of testing / inspection report & certificate, please contact us at telephone:(86-755) 8307 1443, or email: CN.Doccheck@sgs.com

Room 101-501, Plant 4 & Room 101, Plant 2 & Room 101, Plant 3 & Room 301-501, Plant 3, Jilanghao (Banlian) Industrial Plant Area, No.430, Jilua Road, Banlian Community, Banlian Street, Longgang District, Shenzhen, Guangdong, China 518129 www.sgs.com.cn  
中国·广东·深圳市龙岗区坂田街道坂田社区吉华路430号江源(坂田)工业厂区厂房4号 101-901、2号101、3号301-501 邮编: 518129 t:(86-755) 25328888 sgs.china@sgs.com

**BS EN 71-2:2020 – SAFETY OF TOYS – PART 2: FLAMMABILITY**

AS SPECIFIED IN BS EN 71-2:2020 – SAFETY OF TOYS – PART 2: FLAMMABILITY

Type of gas: Butane gas used in the test burner

Clauses relevant to the item:

Clause	Description	Result
4.1	General requirements	PASS
4.5	Soft-filled toys	PASS
	The red/blue octopus was not tested since the stuffed portion of the sample has a maximum dimension less than 150mm.	

Result Page:

Soft-filled Toys (Clause 4.5)

Sample	Burning Rate (mm/sec)
See sample description	9.1

(Requirement: The rate of spread of flame on the surface of toy shall be not greater than 30 mm/sec or shall self-extinguish)



**LABELING REQUIREMENT (WASHING/CLEANING LABEL, UKCA MARKING OR CE MARKING, IMPORTER/MANUFACTURER NAME AND ADDRESS, PRODUCT IDENTIFICATION) FOR THE MARKET OF GREAT BRITAIN (ENGLAND, WALES AND SCOTLAND) WITH REFERENCE TO THE TOYS (SAFETY) REGULATIONS 2011**

Summary table:

	Observation Result	Location
Washing/Cleaning instruction	Absent. See note 1	----
UKCA marking or CE marking	Present	Packaging
Importer's Name & Address	Absent. See note 3	----
Manufacturer's Name & Address	Absent. See note 3	----
Product ID	Present	Packaging

Note:

1. A toy intended for use by children under 36 months must be designed and manufactured in such a way that it can be cleaned. A textile toy must, to this end, be washable, except if it contains a mechanism that may be damaged if soaked.
2. The UKCA marking should be affixed visibly, legibly and indelibly. UKCA marking should be visible from outside the packaging and its height must be at least 5mm.
3. Manufacturer's and Importer's name, registered trade name or registered trade mark and the address at which the manufacturer can be contacted must be indicated on the toy or, where that is not possible, on its packaging or in a document accompanying the toy.
4. Manufacturers must ensure that their toys bear a type, batch, serial or model number or other information enabling the toy to be identified, or where the size or nature of the toy precludes the information from being marked on the toy that the required information is provided on the packaging or in a document accompanying the toy.
5. Until 31 December 2027, the UKCA marking may be affixed to a document accompanying the toy. Where toys are too small or consist of small parts, the UKCA marking may be affixed to a label which is not affixed to the toy or a leaflet which accompanies the toy.
6. Until 31 December 2027, for the importers who imported the toy from an EEA state or Switzerland, are temporarily permitted to indicate their name, registered trade name or registered trade mark and a postal address on the toy's packaging or in a document accompanying the toy, instead of on the toy itself.
7. Until 11pm 31 December 2024, toys conforming to EU rules, including the CE marking, may be placed on the market of Great Britain. And on 24 January 2024, the UK government announced that it intends to legislate to continue recognition of EU requirements, including the CE marking, indefinitely for a range of product regulations in spring 2024.



Unless otherwise agreed in writing, this document is issued by the Company subject to its General Conditions of Service printed overleaf, available on request or accessible at <http://www.sgs.com/en/Terms-and-Conditions.aspx> and, for electronic format documents, subject to Terms and Conditions for Electronic Documents at <http://www.sgs.com/en/Terms-and-Conditions/Terms-e-Documents.aspx>. Attention is drawn to the limitation of liability, indemnification and jurisdiction issues defined therein. Any holder of this document is advised that information contained hereon reflects the Company's findings at the time of its intervention only and within the limits of Client's instructions, if any. The Company's sole responsibility is to its Client and this document does not exonerate parties to a transaction from exercising all their rights and obligations under the transaction documents. This document cannot be reproduced except in full, without prior written approval of the Company. Any unauthorized alteration, forgery or falsification of the content or appearance of this document is unlawful and offenders may be prosecuted to the fullest extent of the law. Unless otherwise stated the results shown in this test report refer only to the sample(s) tested and such sample(s) are retained for 30 days only.

Attention: To check the authenticity of testing / inspection report & certificate, please contact us at telephone:(86-755) 8307 1443, or email: CN.Doccheck@sgs.com

SGS-CSTC (Shenzhen) Technical Services Co., Ltd.  
Shenzhen Branch Testing Center Hardlines

Room 101-501, Plant 4 & Room 101, Plant 2 & Room 101, Plant 3 & Room 301-501, Plant 3, Jilanghao (Banian) Industrial Plant Area, No.430, Jilang Road, Banian Community, Banian Street, Longgang District, Shenzhen, Guangdong, China 518129  
中国·广东·深圳市龙岗区坂田街道坂田社区吉华路430号江源(坂田)工业厂区厂房4号 101-901、2号101、3号101、3号301-501 邮编: 518129 t:(86-755) 25328888 sgs.china@sgs.com

**Chemical Test Result(s) :**

Test Part Description :

Specimen No.	SGS Sample ID	Description
SN1	XMN24-001663.001	Yellow plastic
SN2	XMN24-001663.002	Orange plastic
SN3	XMN24-001663.003	Blue colored series fabric
SN4	XMN24-001663.004	White coating on plastic
SN5	XMN24-001663.005	Transparent plastic
SN6	XMN24-001663.006	Light nude plastic
SN7	XMN24-001663.007	Green plastic
SN8	XMN24-001663.008	Red soft plastic
SN9	XMN24-001663.009	Pink soft plastic
SN10	XMN24-001663.010	Purple plastic

Remarks :

- (1) 1 mg/kg = 0.0001%
- (2) MDL = Method Detection Limit
- (3) ND = Not Detected ( < MDL )
- (4) "-" = Not Regulated

**The Toys (Safety) Regulations 2011 (S.I. 2011 No.1881) & its Amendments (including S.I. 2022 No.659) & Directive 2009/48/EC and its amendment Council Directive (EU) 2017/738, Commission Directive (EU) 2018/725, Commission Directive (EU) 2019/1922 – BS EN 71-3:2019 + A1:2021 – Migration of certain elements**

**Category III: Scraped-off toy material**

Test Method : With reference to BS EN 71-3:2019+A1:2021. Analysis of general elements was performed by ICP-MS / Chromium (III) was obtained by calculation, chromium (VI) was analyzed by IC-UV-Vis or LC-ICP-MS / organic tin was analyzed by GC-MS.



Unless otherwise agreed in writing, this document is issued by the Company subject to its General Conditions of Service printed overleaf, available on request or accessible at <http://www.sgs.com/en/Terms-and-Conditions.aspx> and, for electronic format documents, subject to Terms and Conditions for Electronic Documents at <http://www.sgs.com/en/Terms-and-Conditions/Terms-e-Documents.aspx>. Attention is drawn to the limitation of liability, indemnification and jurisdiction issues defined therein. Any holder of this document is advised that information contained hereon reflects the Company's findings at the time of its intervention only and within the limits of Client's instructions, if any. The Company's sole responsibility is to its Client and this document does not exonerate parties to a transaction from exercising all their rights and obligations under the transaction documents. This document cannot be reproduced except in full, without prior written approval of the Company. Any unauthorized alteration, forgery or falsification of the content or appearance of this document is unlawful and offenders may be prosecuted to the fullest extent of the law. Unless otherwise stated the results shown in this test report refer only to the sample(s) tested and such sample(s) are retained for 30 days only.

Attention: To check the authenticity of testing / inspection report & certificate, please contact us at telephone:(86-755) 8307 1443, or email: CN.Doccheck@sgs.com

Room 101-801, Plant 4 & Room 101, Plant 2 & Room 101, Plant 3 & Room 301-501, Plant 3, Jilanghao (Banian) Industrial Plant Area, No.430, Jilang Road, Banian Community, Banian Street, Longgang District, Shenzhen, Guangdong, China 518129 [www.sgs.com](http://www.sgs.com)  
 中国·广东·深圳市龙岗区坂田街道坂田社区吉华路430号江源(坂田)工业区厂房4号 101-901、2号101、3号301-501 邮编: 518129 t:(86-755) 25328888 [sgs.china@sgs.com](mailto:sgs.china@sgs.com)

# Test Report

No.: T52410270078XM

Date: MAY 09, 2024

Page 18 of 27

Test Item(s)	Limit	Unit	MDL	001	002	003
Mass of Trace Amount	-	g	-	0.3000	0.3000	0.3000
Soluble Aluminum (Al)	28130	mg/kg	50	ND	ND	ND
Soluble Arsenic (As)	47	mg/kg	10	ND	ND	ND
Soluble Boron (B)	15000	mg/kg	50	ND	ND	ND
Soluble Barium (Ba)	18750	mg/kg	50	ND	ND	ND
Soluble Cadmium (Cd)	17	mg/kg	5	ND	ND	ND
Soluble Cobalt (Co)	130	mg/kg	10	ND	ND	ND
Soluble Chromium (Cr)	-	mg/kg	1	ND	ND	ND
Soluble Chromium (III) (Cr III)	460	mg/kg	1	ND	ND	ND
Soluble Copper (Cu)	7700	mg/kg	50	ND	ND	ND
Soluble Mercury (Hg)	94	mg/kg	10	ND	ND	ND
Soluble Manganese (Mn)	15000	mg/kg	50	ND	ND	ND
Soluble Nickel (Ni)	930	mg/kg	10	ND	ND	ND
Soluble Lead (Pb)	23	mg/kg	2.3	ND	ND	ND
Soluble Antimony (Sb)	560	mg/kg	10	ND	ND	ND
Soluble Selenium (Se)	460	mg/kg	10	ND	ND	ND
Soluble Zinc (Zn)	46000	mg/kg	50	ND	ND	ND
Soluble Strontium (Sr)	56000	mg/kg	50	ND	ND	ND
Soluble Tin (Sn)	180000	mg/kg	3	ND	ND	ND
Soluble Organic Tin	12	mg/kg	-	ND	ND	ND
Soluble Chromium (VI) (Cr VI)	0.053	mg/kg	0.010	ND	ND	ND



Unless otherwise agreed in writing, this document is issued by the Company subject to its General Conditions of Service printed overleaf, available on request or accessible at <http://www.sgs.com/en/Terms-and-Conditions.aspx> and, for electronic format documents, subject to Terms and Conditions for Electronic Documents at <http://www.sgs.com/en/Terms-and-Conditions/Terms-e-Documents.aspx>. Attention is drawn to the limitation of liability, indemnification and jurisdiction issues defined therein. Any holder of this document is advised that information contained hereon reflects the Company's findings at the time of its intervention only and within the limits of Client's instructions, if any. The Company's sole responsibility is to its Client and this document does not exonerate parties to a transaction from exercising all their rights and obligations under the transaction documents. This document cannot be reproduced except in full, without prior written approval of the Company. Any unauthorized alteration, forgery or falsification of the content or appearance of this document is unlawful and offenders may be prosecuted to the fullest extent of the law. Unless otherwise stated the results shown in this test report refer only to the sample(s) tested and such sample(s) are retained for 30 days only.

Attention: To check the authenticity of testing / inspection report & certificate, please contact us at telephone:(86-755) 8307 1443, or email: CN.Doccheck@sgs.com

# Test Report

No.: T52410270078XM

Date: MAY 09, 2024

Page 19 of 27

Test Item(s)	Limit	Unit	MDL	004	005	006
Mass of Trace Amount	-	g	-	0.0431	0.3000	0.3000
Soluble Aluminum (Al)	28130	mg/kg	50	88	ND	ND
Soluble Arsenic (As)	47	mg/kg	10	ND	ND	ND
Soluble Boron (B)	15000	mg/kg	50	ND	ND	ND
Soluble Barium (Ba)	18750	mg/kg	50	ND	ND	ND
Soluble Cadmium (Cd)	17	mg/kg	5	ND	ND	ND
Soluble Cobalt (Co)	130	mg/kg	10	ND	ND	ND
Soluble Chromium (Cr)	-	mg/kg	1	ND	ND	ND
Soluble Chromium (III) (Cr III)	460	mg/kg	1	ND	ND	ND
Soluble Copper (Cu)	7700	mg/kg	50	ND	ND	ND
Soluble Mercury (Hg)	94	mg/kg	10	ND	ND	ND
Soluble Manganese (Mn)	15000	mg/kg	50	ND	ND	ND
Soluble Nickel (Ni)	930	mg/kg	10	ND	ND	ND
Soluble Lead (Pb)	23	mg/kg	2.3	ND	ND	ND
Soluble Antimony (Sb)	560	mg/kg	10	ND	ND	ND
Soluble Selenium (Se)	460	mg/kg	10	ND	ND	ND
Soluble Zinc (Zn)	46000	mg/kg	50	ND	ND	ND
Soluble Strontium (Sr)	56000	mg/kg	50	ND	ND	ND
Soluble Tin (Sn)	180000	mg/kg	3	ND	ND	ND
Soluble Organic Tin	12	mg/kg	-	ND	ND	ND
Soluble Chromium (VI) (Cr VI)	0.053	mg/kg	0.010	ND	ND	ND



Unless otherwise agreed in writing, this document is issued by the Company subject to its General Conditions of Service printed overleaf, available on request or accessible at <http://www.sgs.com/en/Terms-and-Conditions.aspx> and, for electronic format documents, subject to Terms and Conditions for Electronic Documents at <http://www.sgs.com/en/Terms-and-Conditions/Terms-e-Documents.aspx>. Attention is drawn to the limitation of liability, indemnification and jurisdiction issues defined therein. Any holder of this document is advised that information contained hereon reflects the Company's findings at the time of its intervention only and within the limits of Client's instructions, if any. The Company's sole responsibility is to its Client and this document does not exonerate parties to a transaction from exercising all their rights and obligations under the transaction documents. This document cannot be reproduced except in full, without prior written approval of the Company. Any unauthorized alteration, forgery or falsification of the content or appearance of this document is unlawful and offenders may be prosecuted to the fullest extent of the law. Unless otherwise stated the results shown in this test report refer only to the sample(s) tested and such sample(s) are retained for 30 days only.

Attention: To check the authenticity of testing / inspection report & certificate, please contact us at telephone: (86-755) 8307 1443, or email: CN.Doccheck@sgs.com

# Test Report

No.: T52410270078XM

Date: MAY 09, 2024

Page 20 of 27

Test Item(s)	Limit	Unit	MDL	007	008	009
Mass of Trace Amount	-	g	-	0.3000	0.3000	0.3000
Soluble Aluminum (Al)	28130	mg/kg	50	ND	ND	ND
Soluble Arsenic (As)	47	mg/kg	10	ND	ND	ND
Soluble Boron (B)	15000	mg/kg	50	ND	ND	ND
Soluble Barium (Ba)	18750	mg/kg	50	ND	ND	ND
Soluble Cadmium (Cd)	17	mg/kg	5	ND	ND	ND
Soluble Cobalt (Co)	130	mg/kg	10	ND	ND	ND
Soluble Chromium (Cr)	-	mg/kg	1	ND	ND	ND
Soluble Chromium (III) (Cr III)	460	mg/kg	1	ND	ND	ND
Soluble Copper (Cu)	7700	mg/kg	50	ND	ND	ND
Soluble Mercury (Hg)	94	mg/kg	10	ND	ND	ND
Soluble Manganese (Mn)	15000	mg/kg	50	ND	ND	ND
Soluble Nickel (Ni)	930	mg/kg	10	ND	ND	ND
Soluble Lead (Pb)	23	mg/kg	2.3	ND	ND	ND
Soluble Antimony (Sb)	560	mg/kg	10	ND	ND	ND
Soluble Selenium (Se)	460	mg/kg	10	ND	ND	ND
Soluble Zinc (Zn)	46000	mg/kg	50	ND	ND	ND
Soluble Strontium (Sr)	56000	mg/kg	50	ND	ND	ND
Soluble Tin (Sn)	180000	mg/kg	3	ND	ND	ND
Soluble Organic Tin	12	mg/kg	-	ND	ND	ND
Soluble Chromium (VI) (Cr VI)	0.053	mg/kg	0.010	ND	ND	ND



SGS-CSTC Shenzhen Technical Services Co., Ltd.  
Shenzhen Branch Testing Center Hardlines

Unless otherwise agreed in writing, this document is issued by the Company subject to its General Conditions of Service printed overleaf, available on request or accessible at <http://www.sgs.com/en/Terms-and-Conditions.aspx> and, for electronic format documents, subject to Terms and Conditions for Electronic Documents at <http://www.sgs.com/en/Terms-and-Conditions/Terms-e-Documents.aspx>. Attention is drawn to the limitation of liability, indemnification and jurisdiction issues defined therein. Any holder of this document is advised that information contained hereon reflects the Company's findings at the time of its intervention only and within the limits of Client's instructions, if any. The Company's sole responsibility is to its Client and this document does not exonerate parties to a transaction from exercising all their rights and obligations under the transaction documents. This document cannot be reproduced except in full, without prior written approval of the Company. Any unauthorized alteration, forgery or falsification of the content or appearance of this document is unlawful and offenders may be prosecuted to the fullest extent of the law. Unless otherwise stated the results shown in this test report refer only to the sample(s) tested and such sample(s) are retained for 30 days only.

Attention: To check the authenticity of testing / inspection report & certificate, please contact us at telephone:(86-755) 8307 1443, or email: CN.Doccheck@sgs.com

Room 101-501, Plant 4 & Room 101, Plant 2 & Room 101, Plant 3 & Room 301-501, Plant 3, Jilanghao (Banlian) Industrial Plant Area, No.430, Jilua Road, Banlian Community, Banlian Street, Longgang District, Shenzhen, Guangdong, China 518129 www.sgs.com.cn  
中国·广东·深圳市龙岗区坂田街道坂田社区吉华路430号江源(坂田)工业厂区厂房4号 101-901、2号101、3号301-501 邮编: 518129 t:(86-755) 25328888 sgs.china@sgs.com

<u>Test Item(s)</u>	<u>Limit</u>	<u>Unit</u>	<u>MDL</u>	<u>010</u>
Mass of Trace Amount	-	g	-	0.3000
Soluble Aluminum (Al)	28130	mg/kg	50	ND
Soluble Arsenic (As)	47	mg/kg	10	ND
Soluble Boron (B)	15000	mg/kg	50	ND
Soluble Barium (Ba)	18750	mg/kg	50	ND
Soluble Cadmium (Cd)	17	mg/kg	5	ND
Soluble Cobalt (Co)	130	mg/kg	10	ND
Soluble Chromium (Cr)	-	mg/kg	1	ND
Soluble Chromium (III) (Cr III)	460	mg/kg	1	ND
Soluble Copper (Cu)	7700	mg/kg	50	ND
Soluble Mercury (Hg)	94	mg/kg	10	ND
Soluble Manganese (Mn)	15000	mg/kg	50	ND
Soluble Nickel (Ni)	930	mg/kg	10	ND
Soluble Lead (Pb)	23	mg/kg	2.3	ND
Soluble Antimony (Sb)	560	mg/kg	10	ND
Soluble Selenium (Se)	460	mg/kg	10	ND
Soluble Zinc (Zn)	46000	mg/kg	50	ND
Soluble Strontium (Sr)	56000	mg/kg	50	ND
Soluble Tin (Sn)	180000	mg/kg	3	ND
Soluble Organic Tin	12	mg/kg	-	ND
Soluble Chromium (VI) (Cr VI)	0.053	mg/kg	0.010	ND

Notes :

- + Soluble Chromium is not restricted by BS EN 71-3:2019+A1:2021, results shown only for reference
- ^ Confirmation test of soluble organic tin is not required in case of soluble tin, after conversion, does not exceed the soluble organic tin requirement as specified in BS EN 71-3:2019+A1:2021.

The below note(s) is(are) applicable in case the relevant superscript(s) and symbol(s) was(were) shown in the result table:

- \* = Exceeds Permissible Limit



SGS-CSTC Technical Services Co., Ltd.  
Shenzhen Branch Testing Center Hardlines

Unless otherwise agreed in writing, this document is issued by the Company subject to its General Conditions of Service printed overleaf, available on request or accessible at <http://www.sgs.com/en/Terms-and-Conditions.aspx> and, for electronic format documents, subject to Terms and Conditions for Electronic Documents at <http://www.sgs.com/en/Terms-and-Conditions/Terms-e-Documents.aspx>. Attention is drawn to the limitation of liability, indemnification and jurisdiction issues defined therein. Any holder of this document is advised that information contained hereon reflects the Company's findings at the time of its intervention only and within the limits of Client's instructions, if any. The Company's sole responsibility is to its Client and this document does not exonerate parties to a transaction from exercising all their rights and obligations under the transaction documents. This document cannot be reproduced except in full, without prior written approval of the Company. Any unauthorized alteration, forgery or falsification of the content or appearance of this document is unlawful and offenders may be prosecuted to the fullest extent of the law. Unless otherwise stated the results shown in this test report refer only to the sample(s) tested and such sample(s) are retained for 30 days only.

Attention: To check the authenticity of testing / inspection report & certificate, please contact us at telephone:(86-755) 8307 1443, or email: CN.Doccheck@sgs.com

Room 101-501, Plant 4 & Room 101, Plant 2 & Room 101, Plant 3 & Room 301-501, Plant 3, Jilanghao (Banian) Industrial Plant Area, No.430, Jilang Road, Banian Community, Banian Street, Longgang District, Shenzhen, Guangdong, China 518129 www.sgs.com.cn  
中国·广东·深圳市龙岗区坂田街道坂田社区吉华路 430 号江源 (坂田) 工业厂区厂房 4 号 101-901、2 号 101、3 号 301-501 邮编: 518129 t:(86-755) 25328888 sgs.china@sgs.com

N.B. : - Only applicable clauses were shown.

**Note:**

The below note(s) is(are) applicable in case the relevant superscript(s) and symbol(s) was(were) shown in the report:

N/A = Not Applicable

\*\* = Visual Examination

DNI = Did Not Ignite

SE = Self-Extinguishing

IBE = Ignite But Self-Extinguished

SE within 50mm = Self-extinguished within 50 mm of flame application

**Remark:**

1. Since the data and / or information above division line of front page is provided by the applicant, the relevant results or conclusions of this report are only made for these data and / or information, SGS shall not be responsible for the authenticity and integrity of such data and information and the validity of the results and / or conclusions arising therefrom. Testing results only apply to the sample as received.
2. The statement of conformity has considered the decision rule based on the Guarded acceptance (8.3.2 of ISO/IEC GUIDE 98-4:2012). When the measured value falls within the guard band, only the test data and measurement uncertainty will be reported. The guard band is equal to the expanded measurement uncertainty with a 95% coverage probability( $k=2$ ),  $w = U_{95}$ . The Probability of False Accept and the Probability of False Reject of the decision rule are 2.5%.

For Upper Tolerance Limit ( $T_U$ ):Pass - when the measurement result is below  $T_U - U_{95}$ Fail - when the measurement result is above  $T_U + U_{95}$ Inconclusive - when the measurement result is falling in guard band [ $T_U - U_{95}$ ,  $T_U + U_{95}$ ]For Lower Tolerance Limit ( $T_L$ ):Pass - when the measurement result is above  $T_L + U_{95}$ Fail - when the measurement result is below  $T_L - U_{95}$ Inconclusive - when the measurement result is falling in guard band [ $T_L - U_{95}$ ,  $T_L + U_{95}$ ]

**Sample Picture (As received)**

Pic.1



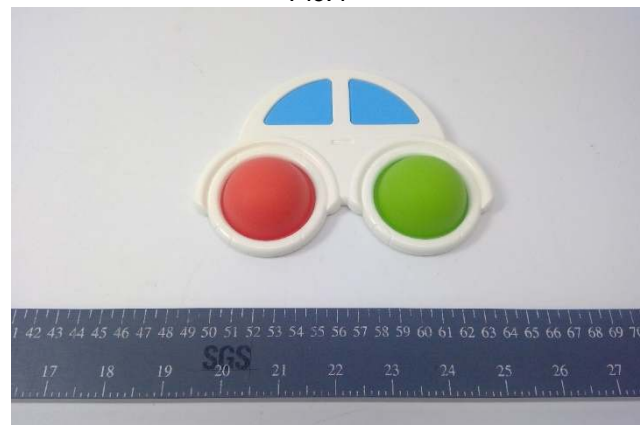
Pic.2



Pic.3



Pic.4



Pic.5



Pic.6



Unless otherwise agreed in writing, this document is issued by the Company subject to its General Conditions of Service printed overleaf, available on request or accessible at <http://www.sgs.com/en/Terms-and-Conditions.aspx> and, for electronic format documents, subject to Terms and Conditions for Electronic Documents at <http://www.sgs.com/en/Terms-and-Conditions/Terms-e-Document.aspx>. Attention is drawn to the limitation of liability, indemnification and jurisdiction issues defined therein. Any holder of this document is advised that information contained hereon reflects the Company's findings at the time of its intervention only and within the limits of Client's instructions, if any. The Company's sole responsibility is to its Client and this document does not exonerate parties to a transaction from exercising all their rights and obligations under the transaction documents. This document cannot be reproduced except in full, without prior written approval of the Company. Any unauthorized alteration, forgery or falsification of the content or appearance of this document is unlawful and offenders may be prosecuted to the fullest extent of the law. Unless otherwise stated the results shown in this test report refer only to the sample(s) tested and such sample(s) are retained for 30 days only.

Attention: To check the authenticity of testing / inspection report & certificate, please contact us at telephone:(86-755) 8307 1443, or email: CN.Doccheck@sgs.com

Pic.7



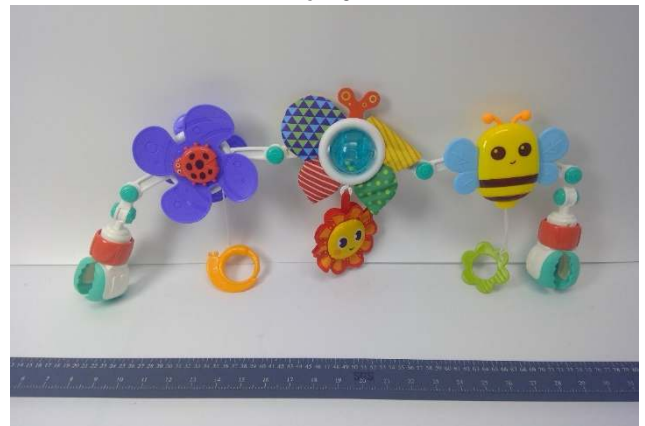
Pic.8



Pic.9



Pic.10



Pic.11



Pic.12



Unless otherwise agreed in writing, this document is issued by the Company subject to its General Conditions of Service printed overleaf, available on request or accessible at <http://www.sgs.com/en/Terms-and-Conditions.aspx> and, for electronic format documents, subject to Terms and Conditions for Electronic Documents at <http://www.sgs.com/en/Terms-and-Conditions/Terms-e-Documents.aspx>. Attention is drawn to the limitation of liability, indemnification and jurisdiction issues defined therein. Any holder of this document is advised that information contained hereon reflects the Company's findings at the time of its intervention only and within the limits of Client's instructions, if any. The Company's sole responsibility is to its Client and this document does not exonerate parties to a transaction from exercising all their rights and obligations under the transaction documents. This document cannot be reproduced except in full, without prior written approval of the Company. Any unauthorized alteration, forgery or falsification of the content or appearance of this document is unlawful and offenders may be prosecuted to the fullest extent of the law. Unless otherwise stated the results shown in this test report refer only to the sample(s) tested and such sample(s) are retained for 30 days only.

Attention: To check the authenticity of testing / inspection report & certificate, please contact us at telephone:(86-755) 8307 1443, or email: CN.Doccheck@sgs.com

SGS-CSTC Shenzhen Technical Services Co., Ltd.  
Shenzhen Branch Testing Center Hardlines

Room 101-501, Plant 4 & Room 101, Plant 2 & Room 101, Plant 3 & Room 301-501, Plant 3, Jianghao (Banian) Industrial Plant Area, No.430, Jihua Road, Banian Community, Banian Street, Longgang District, Shenzhen, Guangdong, China 518129 www.sgs.com.cn  
中国·广东·深圳市龙岗区坂田街道坂田社区吉华路430号江灏(坂田)工业区厂房4号 101-901、2号101、3号101、3号301-501 邮编: 518129 t:(86-755) 25328888 sgs.china@sgs.com

Pic.13



Pic.14



Pic.15



Pic.16



Pic.17



Pic.18



Unless otherwise agreed in writing, this document is issued by the Company subject to its General Conditions of Service printed overleaf, available on request or accessible at <http://www.sgs.com/en/Terms-and-Conditions.aspx> and, for electronic format documents, subject to Terms and Conditions for Electronic Documents at <http://www.sgs.com/en/Terms-and-Conditions/Terms-e-Documents.aspx>. Attention is drawn to the limitation of liability, indemnification and jurisdiction issues defined therein. Any holder of this document is advised that information contained hereon reflects the Company's findings at the time of its intervention only and within the limits of Client's instructions, if any. The Company's sole responsibility is to its Client and this document does not exonerate parties to a transaction from exercising all their rights and obligations under the transaction documents. This document cannot be reproduced except in full, without prior written approval of the Company. Any unauthorized alteration, forgery or falsification of the content or appearance of this document is unlawful and offenders may be prosecuted to the fullest extent of the law. Unless otherwise stated the results shown in this test report refer only to the sample(s) tested and such sample(s) are retained for 30 days only.

Attention: To check the authenticity of testing / inspection report & certificate, please contact us at telephone:(86-755) 8307 1443, or email: CN.Doccheck@sgs.com

Pic.19



Pic.20



Pic.21



Pic.22



Pic.23



Pic.24



Unless otherwise agreed in writing, this document is issued by the Company subject to its General Conditions of Service printed overleaf, available on request or accessible at <http://www.sgs.com/en/Terms-and-Conditions.aspx> and, for electronic format documents, subject to Terms and Conditions for Electronic Documents at <http://www.sgs.com/en/Terms-and-Conditions/Terms-e-Documents.aspx>. Attention is drawn to the limitation of liability, indemnification and jurisdiction issues defined therein. Any holder of this document is advised that information contained hereon reflects the Company's findings at the time of its intervention only and within the limits of Client's instructions, if any. The Company's sole responsibility is to its Client and this document does not exonerate parties to a transaction from exercising all their rights and obligations under the transaction documents. This document cannot be reproduced except in full, without prior written approval of the Company. Any unauthorized alteration, forgery or falsification of the content or appearance of this document is unlawful and offenders may be prosecuted to the fullest extent of the law. Unless otherwise stated the results shown in this test report refer only to the sample(s) tested and such sample(s) are retained for 30 days only.

Attention: To check the authenticity of testing / inspection report & certificate, please contact us at telephone:(86-755) 8307 1443, or email: CN.Doccheck@sgs.com

Room 101-801, Plant 4 & Room 101, Plant 2 & Room 101, Plant 3 & Room 301-501, Plant 3, Jianghao (Bantian) Industrial Plant Area, No.430, Jihua Road, Bantian Community, Bantian Street, Longgang District, Shenzhen, Guangdong, China 518129 [www.sgs.com.cn](http://www.sgs.com.cn)  
 中国·广东·深圳市龙岗区坂田街道坂田社区吉华路 430 号江灏 (坂田) 工业厂区厂房 4 号 101-901、2 号 101、3 号 101、3 号 301-501 邮编: 518129 t:(86-755) 25328888 [sgs.china@sgs.com](mailto:sgs.china@sgs.com)



Pic.25



Pic.26



SGS authenticate the photo on original report only

\*\*\* End of Report \*\*\*



SGS-CSTC Standards Technical Services Co., Ltd.  
Shenzhen Branch Testing Center Hardlines

Unless otherwise agreed in writing, this document is issued by the Company subject to its General Conditions of Service printed overleaf, available on request or accessible at <http://www.sgs.com/en/Terms-and-Conditions.aspx> and, for electronic format documents, subject to Terms and Conditions for Electronic Documents at <http://www.sgs.com/en/Terms-and-Conditions/Terms-e-Document.aspx>. Attention is drawn to the limitation of liability, indemnification and jurisdiction issues defined therein. Any holder of this document is advised that information contained hereon reflects the Company's findings at the time of its intervention only and within the limits of Client's instructions, if any. The Company's sole responsibility is to its Client and this document does not exonerate parties to a transaction from exercising all their rights and obligations under the transaction documents. This document cannot be reproduced except in full, without prior written approval of the Company. Any unauthorized alteration, forgery or falsification of the content or appearance of this document is unlawful and offenders may be prosecuted to the fullest extent of the law. Unless otherwise stated the results shown in this test report refer only to the sample(s) tested and such sample(s) are retained for 30 days only.

Attention: To check the authenticity of testing / inspection report & certificate, please contact us at telephone:(86-755) 8307 1443, or email: CN.Doccheck@sgs.com

Room 101-801, Plant 4 & Room 101, Plant 2 & Room 101, Plant 3 & Room 301-501, Plant 3, Jianghao (Banian) Industrial Plant Area, No.430, Jihua Road, Banian Community, Banian Street, Longgang District, Shenzhen, Guangdong, China 518129 www.sgs.com.cn  
中国·广东·深圳市龙岗区坂田街道坂田社区吉华路 430 号江源 (坂田) 工业厂区厂房 4 号 101-901、2 号 101、3 号 101、3 号 301-501 邮编: 518129 t:(86-755) 25328888 sgs.china@sgs.com